



PCISA GIRLS HIGH SCHOOL INVITATIONAL

Hosted by San Diego Yacht Club & the
Pacific Coast Interscholastic Sailing Association



October 21-22, 2017

SAILING INSTRUCTIONS *Amended 10/21- 13.2 and Course Chart*

1. **RULES**

The regatta will be governed by the current *Racing Rules of Sailing (RRS)*, the current ISSA Procedural Rules, the Notice of Race, and these Sailing Instructions (including Attachments A & B).

2. **ENTRIES**

Teams must check-in between 0900-1000 hours on Saturday, October 21st.

3. **COMMUNICATION WITH COMPETITORS**

3.1 A MANDATORY Sailor's Meeting will be held at SDYC on the Pool Pavilion lawn on Saturday, October 21st at 1000 hours.

3.2 Official Notices will be posted on the Official Regatta Notice Board located on the east side of the Malin Burnham Sailing Center.

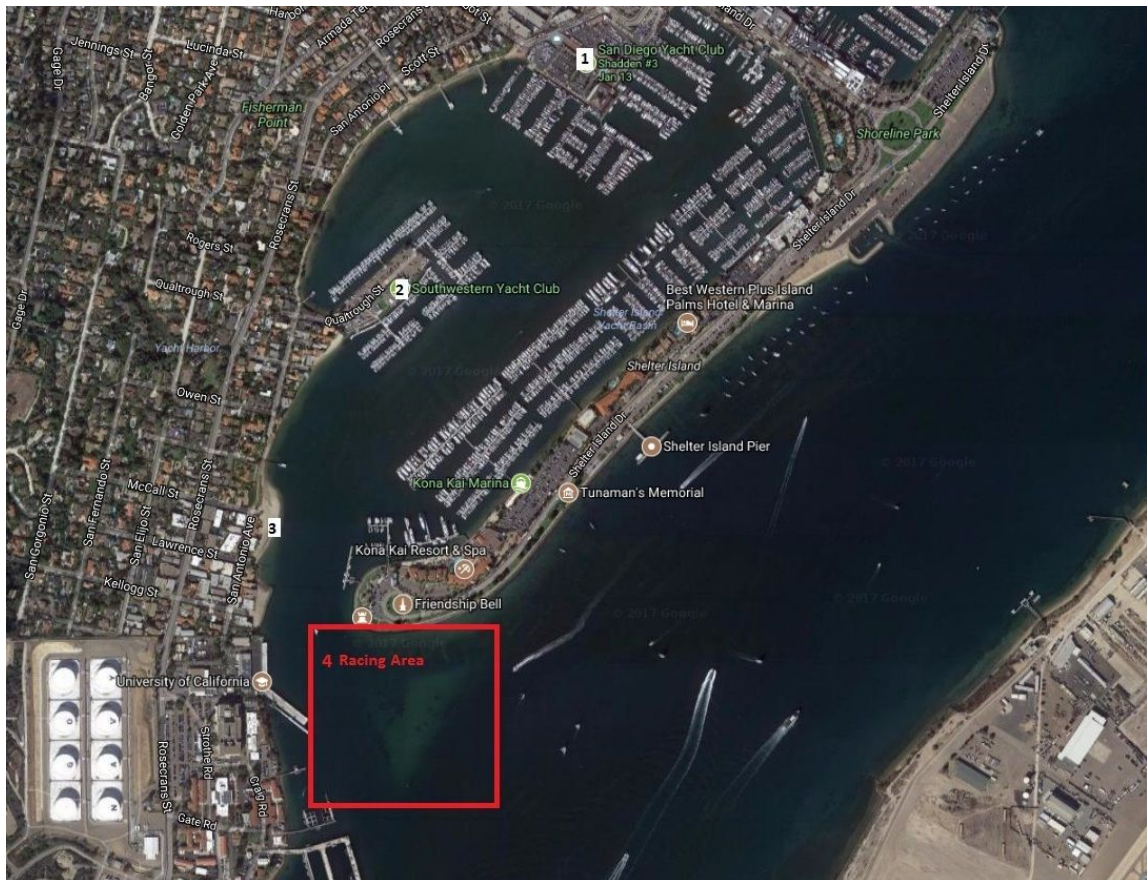
3.3 Changes to the Sailing Instructions will be posted by 1000 hours on the day they are to take effect, except any changes to Sailing Instruction 4, Number & Schedule of Races, will be posted by 1900 hours on the day before they take effect.

4. **SCHEDULE**

Friday, October 20, 2017	
1300-1730	Boats available for practice, one boat per team. (regatta damage deposit required, per NOR)
Saturday, October 21, 2017	
0830-0930	Check-In and Rigging
1000	MANDATORY Sailor's Meeting (<i>Pool Pavilion lawn at SDYC</i>)
1100	First Warning - racing will continue throughout the day (<i>no lunch break</i>)
Sunday, October 22, 2017	
0900	Check-In and Rigging
1000	MANDATORY Sailor's Meeting (<i>Pool Pavilion lawn at SDYC</i>)
1100	First Warning - racing will continue throughout the day (<i>no lunch break</i>)
1500	No race will be started after this time
After Racing	Awards Presentation at San Diego Yacht Club

5. **RACING AREA**

The intended racing area will be the shoal, immediately South of Shelter Island. The intended rotation area will be Kellogg's Beach, 0.1 NM West of the racing area, and at the foot of Lawrence Street, by land.



- 1- San Diego Yacht Club
- 2- Southwestern Yacht Club (Bathrooms)
- 3 Kellogg's Beach (Rotation Area)
- 4- Intended Racing Area

6. COURSES & MARKS

- 6.1 Courses will be in accordance with ISSA PR 7.7. See Attachment A for the course chart.
- 6.2 The Race Committee will designate the course with a placard on the RC Start Boat.
- 6.3 All marks shall be inflatable yellow buoys, except for start and finish pins, which shall be red inflatable buoys.
- 6.4 In accordance with ISSA PR 7.7(c) after the starting signal, the race committee may change the position of any mark to maintain course configuration, provided that no boat is on that leg of the course. No signals are required.

7. SHORTENING AND ABANDONING RACES

- 7.1 In accordance with ISSA PR 7.7(d) races will not be shortened. They will be abandoned. No signals are required. A race may be abandoned at any time at the discretion of the race committee, in consultation with the protest committee if possible.

8. START, FINISH, AND RECALLS

- 8.1 Races will start in accordance with ISSA PR 7.8(a).
- 8.2 Individual recalls will be made in accordance with RRS Appendix S6.
- 8.3 General recalls will be signaled by a series of short whistles. After a general recall, the round the ends provision of RRS 30.1 shall apply except Flag I need not be displayed in accordance with ISSA PR 7.8(b).
- 8.4 The start line will be between an Orange Flag on the Finish boat and red inflatable buoy. The start line may also serve as a finish line, depending on the course selected. The start line is not restricted during racing.
- 8.5 The finish line will be between an Orange Flag on the Finish boat and a red inflatable buoy.

9. TIME LIMIT

- 9.1 A boat failing to finish within 10 minutes after the first competitor sails the course shall be scored

“Did Not Finish (DNF)” by the Race Committee. This changes RRS 35.

- 9.2 If a boat is delaying the finish of a race, or the rotation, the Race Committee may end the race and score the boat in its current position.

10. JUDGING

There will be no on the water judging.

11. PROTESTS & BREAKDOWNS

- 11.1 Protests procedure will be in accordance with ISSA PR Part VI, as amended by PCISA.
- 11.2 Competitors shall not communicate with a coach before reporting to the Race Committee their intent to protest.
- 11.3 Protests and requests for redress shall be written on Protest Forms, available at the Shore Base. Protests shall be filed within 30 minutes of the last boat reaching the rotation site after the set the incident occurred. If it is the final set of the day, protests will be filed within 30 minutes of the last boat reaching the SDYC dock.
- 11.4 Breakdown requests shall be filed in the same manner as protests and shall be scored in accordance with ISSA PR 9(f). Compensation shall be consistent with ISSA PR Appendix 3.

12. SCORING:

- 12.1 Scoring will be in accordance with ISSA PR 9.

13. COACHING

- 13.1 Team-leaders, chaperones, advisors, coaches and other support personnel shall not have any contact with the competitors during racing. The penalty for failing to comply with this requirement may be the disqualification of all boats, competitors and teams associated with the infringing support personnel.
- 13.2 If the host is able to supply enough coachboats to place all coaches on the water, this will be allowed. All coachboats will follow all RC instructions, stay clear of racing, and will not interact with sailors during racing. This possibility may be terminated by the RC for any reason.

14. SAFETY

- 14.1 Competitors shall wear USCG approved Type III lifejackets, of the appropriate size, while on the water except when adding or removing clothes.
- 14.2 A boat that retires from a race shall notify the race committee either before leaving the course, or if that is impossible, immediately after arriving ashore.

15. DISPOSAL OF WASTE OR TRASH

- 15.1 No boat shall discharge trash of any kind into the San Diego Bay. Any boat observed breaking this rule is subject to protest only by the Race Committee or Protest Committee. The penalty for a breach of this rule, which may include disqualification from a race, is at the discretion of the Protest Committee. This changes RRS 60.1(a) and 64.1(a).
- 15.2 The regatta organizers strongly encourage re-useable water bottles!

16. PRIZES

- 16.1 Take home awards will be provided to the top three placing teams.

ATTACHMENT B

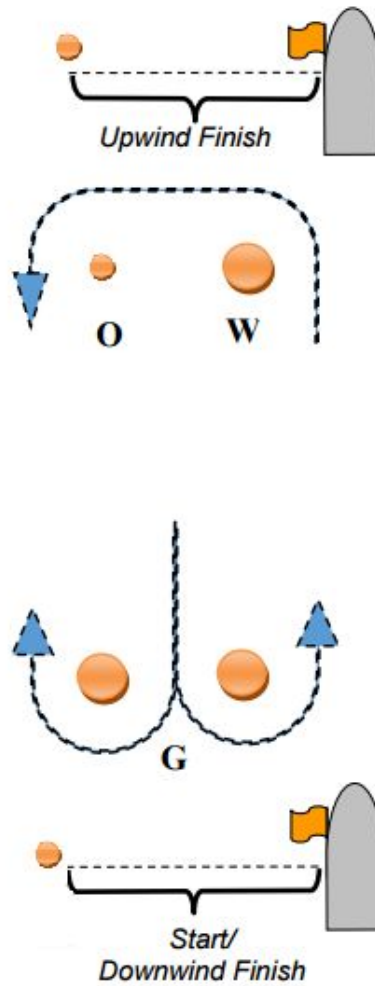
COMMERCIAL TRAFFIC, SAFETY

- B1** Boats shall not impede the passage of commercial vessels and shall comply with the U.S. Inland Navigation Rules Act of 1980.
- B2** If a commercial vessel has sounded five blasts, and/or the vessel or the Coast Guard identifies an offending boat, the Race Committee shall protest the boat, in which case the Protest Committee shall assume that the identified boat has impeded passage or violated the U.S. Inland Navigation Rules, and the identified boat shall have the burden of proving otherwise. In the case of a complaint by Vessel Traffic or the Coast Guard, the protest time limit shall be extended up to two days after the conclusion of the regatta.
This changes RRS 60.2(a) and 61.3.
- B3** A Race Committee boat may signal a boat to alter course to avoid impeding the passage of commercial vessels by making a sound signal (horn or whistle) and pointing Code Flag V at the boat. The signaled boat shall promptly comply with the signal unless compliance would create an unsafe condition. If a boat fails to comply with such a signal, the Race Committee shall protest the boat, in which case the Protest Committee shall assume that the course alteration would not have created an unsafe condition, and the protested boat shall have the burden of proving otherwise.
- B4** A boat may be penalized independently under B1, B2 and/or B3. A violation of any part this attachment shall not be exonerated by a Scoring Penalty, and a resulting disqualification shall not be excludable under RRS A2. SDYC shall cooperate with and provide relevant information to the Coast Guard or other governmental authority regarding investigations of boats impeding ship traffic or violating U.S. Inland Navigation Rules.

Course Card

Marks of the course shall be left to port

Course	Marks
3	Start – W – O – G – Upwind Finish
4	Start – W – O – G – W – O – Downwind Finish
5	Start – W – O – G – W – O – G – Upwind Finish



NOTE: The RC may place the Start/Downwind Finish to windward of the gate.