

2016 DALE JEPSEN ONE DESIGN REGATTA



BELLINGHAM, WA
September 17th and 18th



NOTICE OF RACE

The Organizing Authority (OA) is Bellingham Yacht Club.

Regatta Website: <http://djod.byc.org>

1 RULES

- 1.1 The regatta will be governed by the rules as defined in *The Racing Rules of Sailing* (RRS).
- 1.2 The only US Sailing prescriptions that apply are rules 61.4, Appendix R, and the prescriptions to rules 40, 67, 70.5(a), and 76.1. A copy of the US Sailing prescriptions, in english, can be found at <http://www.ussailing.org/wp-content/uploads/DARoot/RaceAdmin/RacingRules/Documents/2013-2016.US.Sailing.Prescriptions.rev.06.24.14.pdf>
- 1.3 Rule 40 will be replaced with: "Competitors shall wear personal flotation devices at all times when on the water, except briefly while changing or adjusting clothing or personal equipment. Wet suits and dry suits are not personal flotation devices. Inflatable floatation devices are not acceptable."

2 ADVERTISING

- 2.1 Boat and competitors shall comply with ISAF Regulation 20, Advertising Code. Boats may be required to display advertising chosen and supplied by the OA.

3 ELIGIBILITY AND ENTRY

- 3.1 The regatta is open to all motorless one design sailboats.
- 3.2 Eligible boats may enter on-line at the event website.
- 3.3 Competitors who have not reached their 18th birthday before the first day of racing shall present a signed and completed parent (or guardian) consent and declaration form to the registration desk. The forms will be available for download from the event website.

4 FEES

- 4.1 The entry fee is \$50. USD for one person boats, \$70. for 2 person boats, and \$85. for boats having 2 or more persons. Payment of the entry fee will be accepted up to 2400 hours on 9/09/2016.
- 4.2 The late entry fee is \$60 for one person boats, \$80 for 2 person boats, and \$95. for 3 person boats, and will be accepted up to the end of registration.
- 4.3 The entry fee includes:
 - 4.3.1 Two tickets to all social functions including the Saturday evening dinner, and Sunday awards ceremony/ dinner.
 - 4.3.2 Additional tickets for social events may be purchased on---line at the event website or on site at the Bellingham Yacht Club bar/ registration desk.
 - 4.3.3 Event T-Shirts are not included in the entry fee, but are available for \$15 each.

2016 DALE JEPSEN ONE DESIGN REGATTA

5 CLASSES AND AWARDS

- 5.1 A minimum of 5 boats shall constitute a class. A Portsmouth Handicap class may be formed if there are not sufficient entrants for a one design class.
- 5.2 Awards shall be given as follows: Three awards for a class having five or more entries; two awards for a class having four entries racing in Portsmouth, or one award for a class having three or fewer entries racing in Portsmouth. Other awards may be made at the discretion of the OA.

6 SCHEDULE

Friday, September 16th

1700 Open Bar and Fridays @ Five / Registration

Saturday, September 17th

0930 Skipper's Meeting Down stairs in the Bellingham Yacht Club
1000 Registration ends – All competitors must be registered and paid by 1000
1130 Warning Signal for 1st Race of the day
1730 Open Bar at the club/ Keg Tap
1800 Dinner in the BYC Lounge
1930 Karaoke Party Extravaganza

Sunday, September 18th

1030 Warning Signal
1430 No Race will be started after 1430 hrs.
1600 Award Ceremony and meal

6 SAILING INSTRUCTIONS

- 6.1 The sailing instructions will be available on-line at the event website. In addition, copies of the sailing instructions will be available at registration.

8 VENUE AND COURSES

- 8.1 As shown in Attachment A, the regatta venue will be Bellingham Yacht Club. The racing area will be Bellingham Bay.
- 8.2 Courses and marks will be described in the sailing instructions.

9 SCORING

- 9.1 One race is required to be completed to constitute a Regatta.
- 9.2 When fewer than six races have been completed, a boat's series score will be the total of her race scores.
- 9.3 When from six to nine races have been completed, a boat's series score will be the total of her race scores excluding her worst excludable score.
- 9.4 When ten or more races have been completed, a boat's series score will be the total of her race scores excluding her two worst excludable scores.

2016 DALE JEPSEN ONE DESIGN REGATTA

10 BERTHING

- 10.1 When ashore, all boats must be stored on their dollies in the designated area provided by the Port of Bellingham. While sailing, boats' dollies must be stored in the designated area. The designated area will be in the parking lot in close proximity to the launch ramp.
- 10.2 Tent camping is not permitted in the parking area or BYC grounds. Information on RV parking and local accommodations is provided on the event website.
- 10.3 Sanding on boat bottoms of any kind on Port of Bellingham Property is not permitted and will be grounds for removal from property and ejection from the event.

11 DISCLAIMER OF RESPONSIBILITY

- 11.1 Competitors participate in the regatta entirely at their own risk. See rule 4, Decision to Race. The organizing authority will not accept any liability for material damage or personal injury or death sustained in conjunction with or prior to, during or after the regatta.

12 INSURANCE

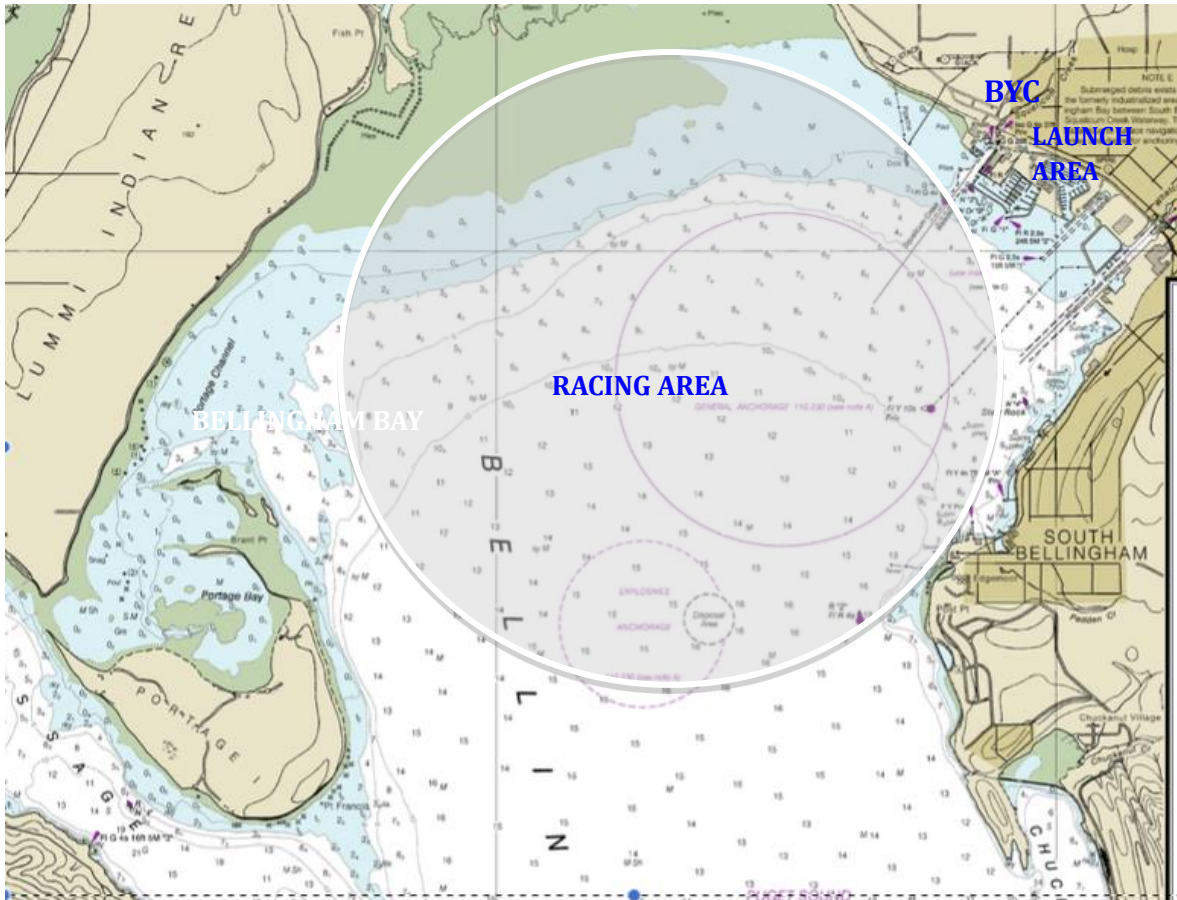
- 12.1 Each participating boat shall be responsible for being insured with valid third party liability insurance for a minimum of \$300,000 USD.

FOR FURTHER INFORMATION:: **Regatta Chairman – Mike Poulos (byclaserfleet@yahoo.com)**
Bellingham Yacht Club

2016 DALE JEPSEN ONE DESIGN REGATTA

APPENDIX A

REGATTA VENUE & BELLINGHAM BAY RACING AREA



END OF NOTICE OF RACE